

CLASSIFICATION: GEAR

STYLE: SPLINE

PRESSURE ANGLE: 20°

TOOTH NUMBER: 20

PITCH DIAMETER: ϕ 12.0

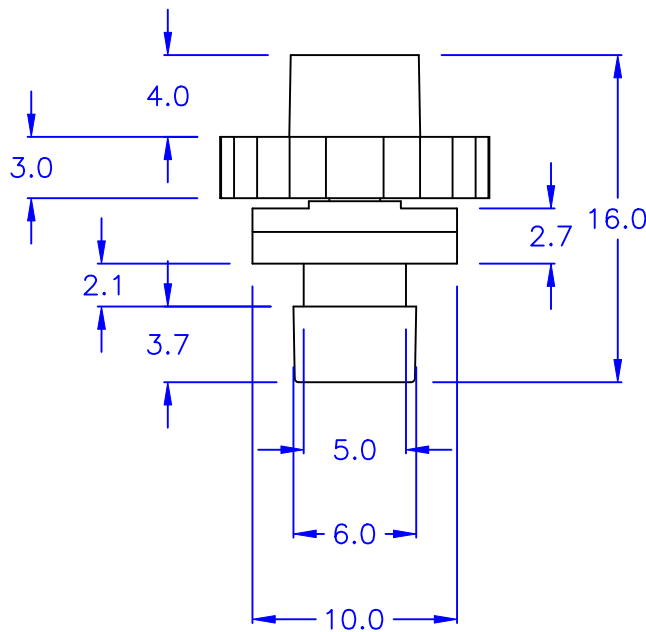
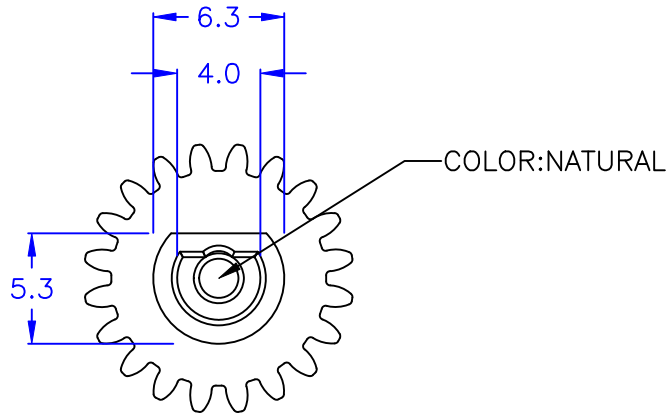
MODULE: 0.6

OUTSIDE DIAMETER: ϕ 13.2

AVAILABLE TORQUE: 7 ± 4 gf-cm (23°C)

THE ROTATION RATE: 20 RPM

* The temperature and R. P. M will be affected the torque



©Halogen

DRAW NO. PGAS030088

GJS

PLASTIC TOLERANCE:

$L \leq 10$	± 0.2
$10 < L \leq 30$	± 0.3
$30 < L \leq 50$	± 0.5
$50 < L \leq 100$	± 0.7
$100 < L \leq 250$	± 1.2
ABOVE 250	± 1.5

網頁圖示供參考, 最終以品固公司正式圖面為主
The plastic tolerance is just for your reference; all the measurements and dimensions are according to the "DATA SHEET" issued by PINGOOD.

MATERIAL:

POM 94HB or EQUIVALENT
PC 94V2 or EQUIVALENT

PART NAME:

ROTARY DAMPER

PART NO:

PG-17-07W



品固企業股份有限公司
品基電子(東莞)有限公司
蘇州品基電子科技有限公司
東莞市鑽隆商貿有限公司
PINGOOD ENTERPRISE CO.,LTD.

A
SIZE

VERSION

1

	UNIT	SCALE
	mm	

COLOR: BLACK

SHEET 1 OF 1