

CLASSIFICATION: GEAR

STYLE: SPLINE

PRESSURE ANGLE: 20°

TOOTH NUMBER: 12

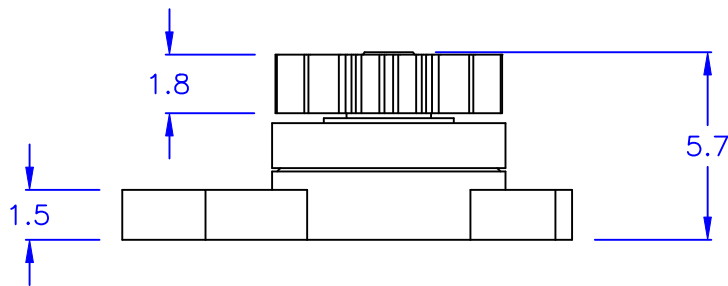
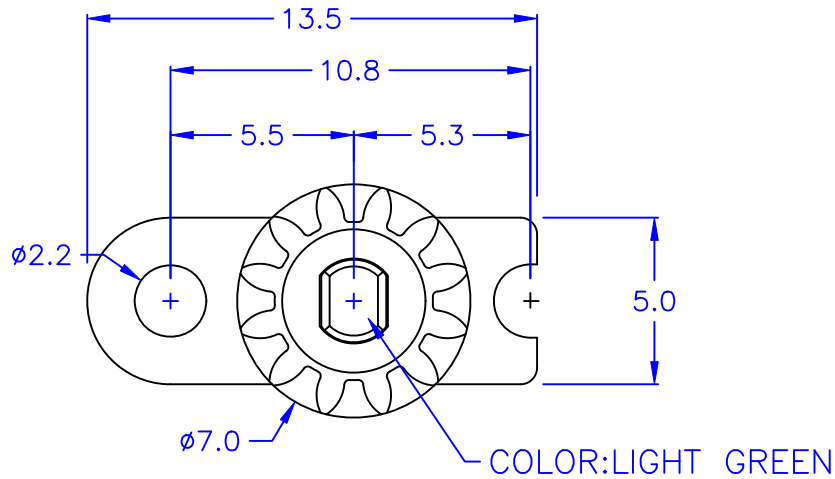
PITCH DIAMETER: ϕ 6.0

MODULE: 0.5

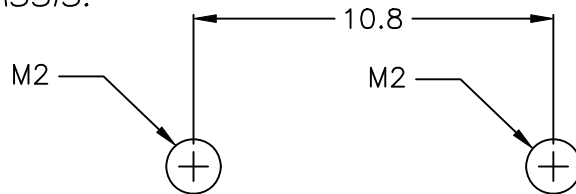
AVAILABLE TORQUE: 30±10 gf-cm (23°C)

THE ROTATION RATE: 20 RPM

* The temperature and R. P. M will be affected the torque



◎ HOLE IN CHASSIS:



◎Halogen

DRAW NO. PGAS030072

GJS

PLASTIC TOLERANCE:

L ≤ 10 ±0.2

10 < L ≤ 30 ±0.3

30 < L ≤ 50 ±0.5

50 < L ≤ 100 ±0.7

100 < L ≤ 250 ±1.2

ABOVE 250 ±1.5

網頁圖示供參考,最終以品固公司正式圖面為主
The plastic tolerance is just for your reference; all the measurements and dimensions are according to the "DATA SHEET" issued by PINGOOD.



品固企業股份有限公司
品基電子(東莞)有限公司
蘇州品基電子科技有限公司
東莞市鑽隆商貿有限公司
PINGOOD ENTERPRISE CO.,LTD.

MATERIAL:

POM 94HB or EQUIVALENT

PC V2 or EQUIVALENT

PART NAME:

ROTARY DAMPER

A

SIZE

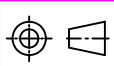
VERSION

1

PART NO:

PG-04K-30F

SHEET 1 OF 1



UNIT
mm

SCALE

COLOR: BLACK