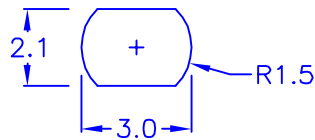


◎ HOLE IN CHASSIS :



◎ CHASSIS THICKNESS: 1.0 mm

◎HF  
◎ROHS compliant

DRAW NO. PGAS016259 GJS

<b>PLASTIC TOLERANCE:</b>		網頁圖示供參考,最終以品固公司正式圖面為主 The plastic tolerance is just for your reference; all the measurements and dimensions are according to the "DATA SHEET" issued by PINGOOD.
L≤10	±0.2	
10<L≤30	±0.3	
30<L≤50	±0.5	
50<L≤100	±0.7	
100<L≤250	±1.2	
ABOVE 250	±1.5	
MATERIAL: N66 V0 or EQUIVALENT		
COLOR: NATURAL		



品固企業股份有限公司  
品基電子(東莞)有限公司  
蘇州品基電子科技有限公司  
鑽隆有限公司  
PINGOOD ENTERPRISE CO.,LTD.

PART NAME:		<b>A</b> SIZE VERSION <b>1A</b>
P.C. 板間隔柱 SPACER SUPPORT		
PART NO:		SHEET 1 OF 1
LWH-3K-NOW		

	UNIT	SCALE
	mm	