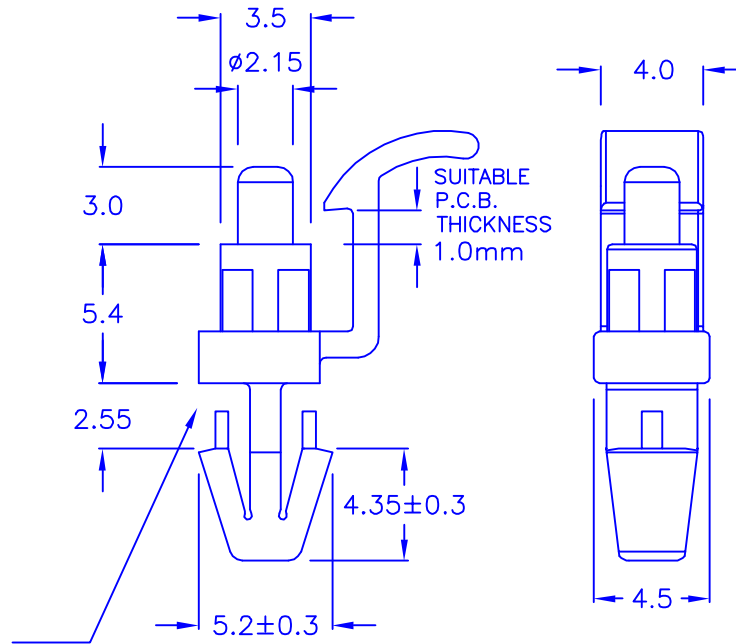
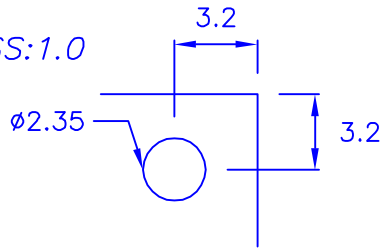


◎ HOLE IN P.C.B
 ◎ P.C.B THICKNESS: 1.0



◎ CHASSIS THICKNESS: 2.4 mm
 ◎ HOLE IN CHASSIS: $\phi 3.7$

◎ ROHS compliant

DRAW NO. PGAS014288

GJS

PLASTIC TOLERANCE:	
$L \leq 10$	± 0.2
$10 < L \leq 30$	± 0.3
$30 < L \leq 50$	± 0.5
$50 < L \leq 100$	± 0.7
$100 < L \leq 250$	± 1.2
ABOVE 250	± 1.5

網頁圖示供參考, 最終以品固公司正式圖面為主
 The plastic tolerance is just for your reference; all the measurements and dimensions are according to the "DATA SHEET" issued by PINGOOD.



品固企業股份有限公司
 品基電子(東莞)有限公司
 蘇州品基電子科技有限公司
 鑽隆有限公司
 PINGOOD ENTERPRISE CO.,LTD.

MATERIAL: N66 V2 or EQUIVALENT
 COLOR: NATURAL

PART NAME:
 P.C. 板間隔柱
 SPACER SUPPORT

A SIZE	VERSION
	1

PART NO:
 LTY-5A-N2W

SHEET 1 OF 1

UNIT	SCALE
mm	