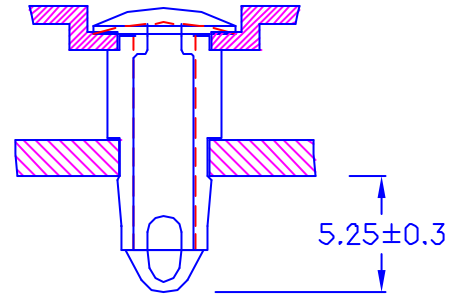
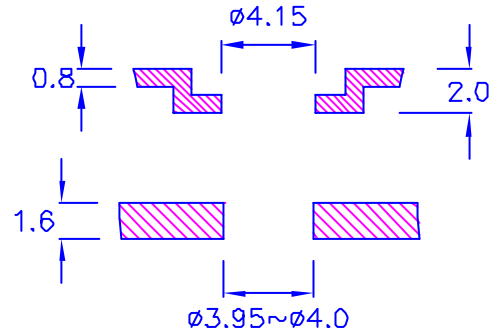


◎ HOLE IN :



組裝示意圖

◎ROHS compliant

DRAW NO. PGAS013584 D

GJS

<b>PLASTIC TOLERANCE:</b>	
L ≤ 10	±0.2
10 < L ≤ 30	±0.3
30 < L ≤ 50	±0.5
50 < L ≤ 100	±0.7
100 < L ≤ 250	±1.2
ABOVE 250	±1.5

網頁圖示供參考, 最終以品固公司正式圖面為主  
The plastic tolerance is just for your reference; all the measurements and dimensions are according to the "DATA SHEET" issued by PINGOOD.

**MATERIAL:** N66 V2 or EQUIVALENT  
**COLOR:** BLACK



品固企業股份有限公司  
品基電子(東莞)有限公司  
蘇州品基電子科技有限公司  
鑽隆有限公司  
PINGOOD ENTERPRISE CO.,LTD.

**PART NAME:**

固定扣  
NIFLATCH

**PART NO.:**

LHA-04N2BZ

A

SIZE

VERSION

2

SHEET 1 OF 1

	UNIT	SCALE
	mm	

EF0404505