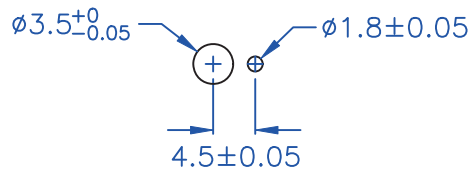


◎ HOLE IN CHASSIS:



◎ CHASSIS THICKNESS:

- 板厚: 0.8~1.25mm, 適用螺絲螺紋長度6.0。
- 板厚: 1.3~1.65mm, 適用螺絲螺紋長度6.5。
- 板厚: 1.7~2.0mm, 適用螺絲螺紋長度7.0。

◎Halogen 有鹵

DRAW NO. PGAS035728

GJS

PLASTIC TOLERANCE:	
$L \leq 10$	± 0.2
$10 < L \leq 30$	± 0.3
$30 < L \leq 50$	± 0.5
$50 < L \leq 100$	± 0.7
$100 < L \leq 250$	± 1.2
ABOVE 250	± 1.5

網頁圖示供參考, 最終以品固公司正式圖面為主
The plastic tolerance is just for your reference; all the measurements and dimensions are according to the "DATA SHEET" issued by PINGOOD.

MATERIAL: N66 V2 or EQUIVALENT

銅柱

COLOR: WHITE



品固企業股份有限公司
品基電子(東莞)有限公司
蘇州品基電子科技有限公司
東莞市鈺隆商貿有限公司
鑽隆有限公司
PINGOOD ENTERPRISE CO.,LTD.

PART NAME:

直立式導槽
PCB GUIDE RAIL

A

VERSION

SIZE

1E

PART NO:

HCG-9-C70

SHEET 1 OF 1



UNIT	SCALE
mm	

表單號碼QF135