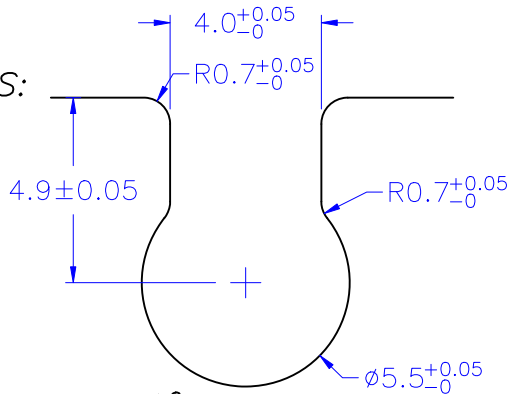


© HOLE IN CHASSIS:



© CHASSIS THICKNESS:  $0.8 \pm 0.05$  mm

©Halogen Free 低鹵

DRAW NO. PGAS037395

GJS

PLASTIC TOLERANCE:

|                    |           |
|--------------------|-----------|
| $L \leq 10$        | $\pm 0.2$ |
| $10 < L \leq 30$   | $\pm 0.3$ |
| $30 < L \leq 50$   | $\pm 0.5$ |
| $50 < L \leq 100$  | $\pm 0.7$ |
| $100 < L \leq 250$ | $\pm 1.2$ |
| ABOVE 250          | $\pm 1.5$ |

網頁圖示供參考, 最終以品固公司正式圖面為主

The plastic tolerance is just for your reference; all the measurements and dimensions are according to the "DATA SHEET" issued by PINGOOD.

MATERIAL: TPE V0 or EQUIVALENT

COLOR: BLACK

試片硬度:  $55^\circ \pm 5^\circ$



品固企業股份有限公司  
品基電子(東莞)有限公司  
蘇州品基電子科技有限公司  
東莞市鈺隆商貿有限公司  
鑽隆有限公司  
PINGOOD ENTERPRISE CO.,LTD.

PART NAME:

防震華司  
SHOCK-ABSORB WASHER

PART NO:

GQH-9AT-ZJB

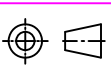
A

SIZE

VERSION

1A

SHEET 1 OF 1



|      |       |
|------|-------|
| UNIT | SCALE |
| mm   |       |