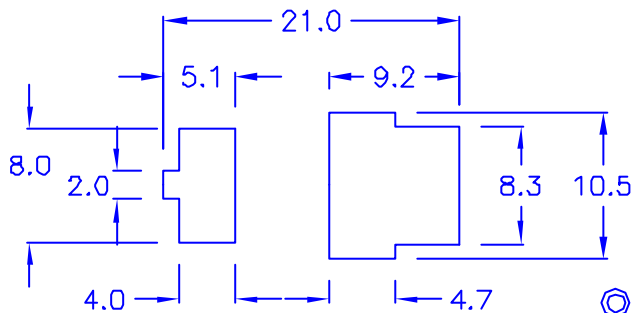


◎ HOLE IN :



◎ CHASSIS THICKNESS: 0.8 mm

◎ROHS compliant

DRAW NO. PGAS013616 E GJS

**PLASTIC TOLERANCE:**  
 L ≤ 10 ±0.2  
 10 < L ≤ 30 ±0.3  
 30 < L ≤ 50 ±0.5  
 50 < L ≤ 100 ±0.7  
 100 < L ≤ 250 ±1.2  
 ABOVE 250 ±1.5

網頁圖示供參考, 最終以品固公司正式圖面為主  
 The plastic tolerance is just for your reference; all the measurements and dimensions are according to the "DATA SHEET" issued by PINGOOD.



品固企業股份有限公司  
 品基電子(東莞)有限公司  
 蘇州品基電子科技有限公司  
 鑽隆有限公司  
 PINGOOD ENTERPRISE CO.,LTD.

**MATERIAL:** N66 V2 or EQUIVALENT  
**COLOR:** NATURAL

**PART NAME:**

電線固定座  
 WIRE MOUNT

A

VERSION

SIZE

3

**PART NO.:**

FW-24-N2W

SHEET 1 OF 1

UNIT	SCALE
mm	

EF0404505