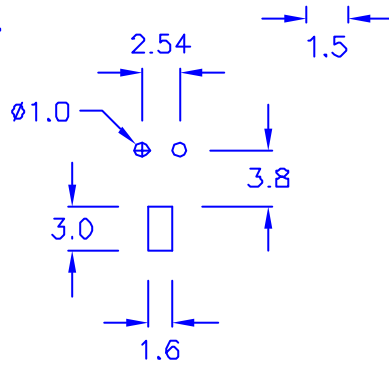


◎ HOLE IN P.C.B:



◎ ROHS compliant

DRAW NO. PGAS011115 C GJS

PLASTIC TOLERANCE:		
$L \leq 10$	± 0.2	
$10 < L \leq 30$	± 0.3	
$30 < L \leq 50$	± 0.5	
$50 < L \leq 100$	± 0.7	
$100 < L \leq 250$	± 1.2	
ABOVE 250	± 1.5	

網頁圖示供參考,最終以品固公司正式圖面為主
The plastic tolerance is just for your reference; all the measurements and dimensions are according to the "DATA SHEET" issued by PINGOOD.



品固企業股份有限公司
品基電子(東莞)有限公司
蘇州品基電子科技有限公司
鑽隆有限公司
PINGOOD ENTERPRISE CO.,LTD.

MATERIAL: N66 V2 or EQUIVALENT
COLOR: BLACK

PART NAME:
LED 座
LED HOUSING

A SIZE	REV.
	2

PART NO.:
EDT-7A-N2B

SHEET 1 OF 1

	UNIT	SCALE
	mm	

EF0404505