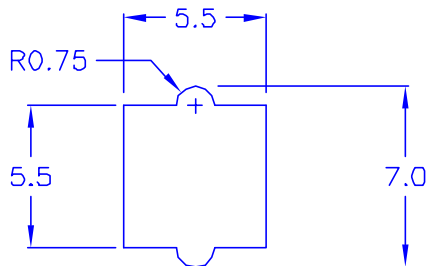


◎ HOLE IN CHASSIS:



◎ CHASSIS THICKNESS: 0.8~1.0 mm

◎HF
◎ROHS compliant

DRAW NO. PGAS017410

GJS

PLASTIC TOLERANCE:	
L ≤ 10	±0.2
10 < L ≤ 30	±0.3
30 < L ≤ 50	±0.5
50 < L ≤ 100	±0.7
100 < L ≤ 250	±1.2
ABOVE 250	±1.5

網頁圖示供參考,最終以品固公司正式圖面為主
The plastic tolerance is just for your reference; all the measurements and dimensions are according to the "DATA SHEET" issued by PINGOOD.

MATERIAL: N66 V2 or EQUIVALENT

COLOR: NATURAL



品固企業股份有限公司
品基電子(東莞)有限公司
蘇州品基電子科技有限公司
鑽隆有限公司
PINGOOD ENTERPRISE CO.,LTD.

PART NAME:

電線固定座
WIRE SADDLE

A
SIZE

VERSION
4A

PART NO:

CU-01-N2W

SHEET 1 OF 1



UNIT
mm

SCALE

表單號碼QF135