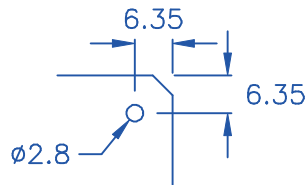


◎ HOLE IN P.C.B.:



◎Halogen Free  
◎ROHS compliant

DRAW NO. PGAS020126

GJS

|                           |           |
|---------------------------|-----------|
| <b>PLASTIC TOLERANCE:</b> |           |
| $L \leq 10$               | $\pm 0.2$ |
| $10 < L \leq 30$          | $\pm 0.3$ |
| $30 < L \leq 50$          | $\pm 0.5$ |
| $50 < L \leq 100$         | $\pm 0.7$ |
| $100 < L \leq 250$        | $\pm 1.2$ |
| ABOVE 250                 | $\pm 1.5$ |

網頁圖示供參考, 最終以品固公司正式圖面為主  
The plastic tolerance is just for your reference; all the measurements and dimensions are according to the "DATA SHEET" issued by PINGOOD.



品固企業股份有限公司  
品基電子(東莞)有限公司  
蘇州品基電子科技有限公司  
鑽隆有限公司  
PINGOOD ENTERPRISE CO.,LTD.

MATERIAL: POM or EQUIVALENT

PART NAME:

拉柄

CIRCUIT BOARD EJECTOR

A  
SIZE

VERSION

1

COLOR: NATURAL

PART NO:

CP-10-POW-Z

SHEET 1 OF 1

|  |      |       |
|--|------|-------|
|  | UNIT | SCALE |
|  | mm   |       |