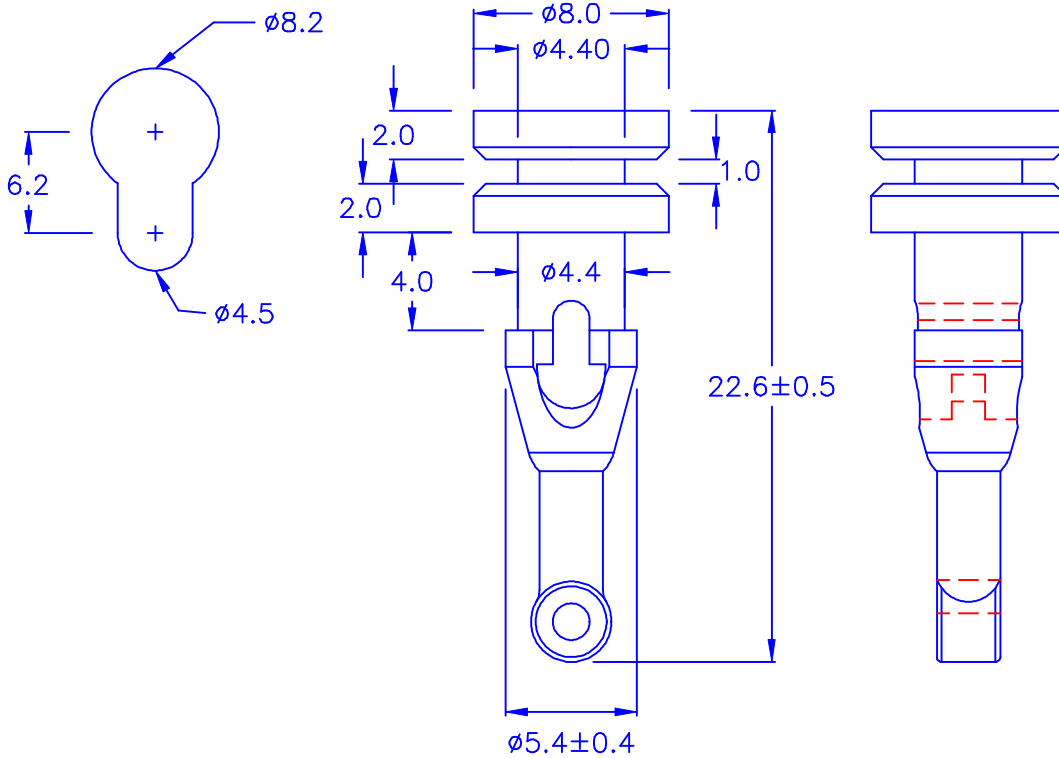


◎ CHASSIS THICKNESS: 1.0 mm

◎ HOLE IN CHASSIS:



◎ FAN CHASSIS THICKNESS: 4.0 mm

◎ HOLE IN FAN: $\phi 4.5$

◎ 所有尺寸量測皆不含進膠口,膠口凸出1.2mm 之內

1.符合歐盟規範

◎ 鎘 (Cd) <100ppm

◎ 鉛 (Pb) <1000ppm

◎ 汞 (Hg) <1000ppm

◎ 六價鉻 (Cr6+) <1000ppm

◎ 多溴聯苯類 (PBB s) <1000ppm

◎ 多溴聯苯醚類 (PBDE s) <1000ppm

2.有鹵

DRAW NO. PGAS020780

GJS

PLASTIC TOLERANCE:

L ≤ 10 ±0.2

10 < L ≤ 30 ±0.3

30 < L ≤ 50 ±0.5

50 < L ≤ 100 ±0.7

100 < L ≤ 250 ±1.2

ABOVE 250 ±1.5

網頁圖示供參考,最終以品固公司正式圖面為主

The plastic tolerance is just for your reference; all the measurements and dimensions are according to the "DATA SHEET" issued by PINGOOD.



品固企業股份有限公司
品基電子(東莞)有限公司
蘇州品基電子科技有限公司
鑽隆有限公司
PINGOOD ENTERPRISE CO.,LTD.

MATERIAL: SANTOPRENE 251-70

or EQUIVALENT

PART NAME:

風扇鉚釘
FAN SNAP RIVET

A
SIZE

VERSION

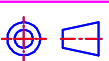
2B

COLOR: BLACK

PART NO:

SR-21Y-RYB

SHEET 1 OF 1



UNIT
mm

SCALE

試片硬度: 75°

表單號碼QF135