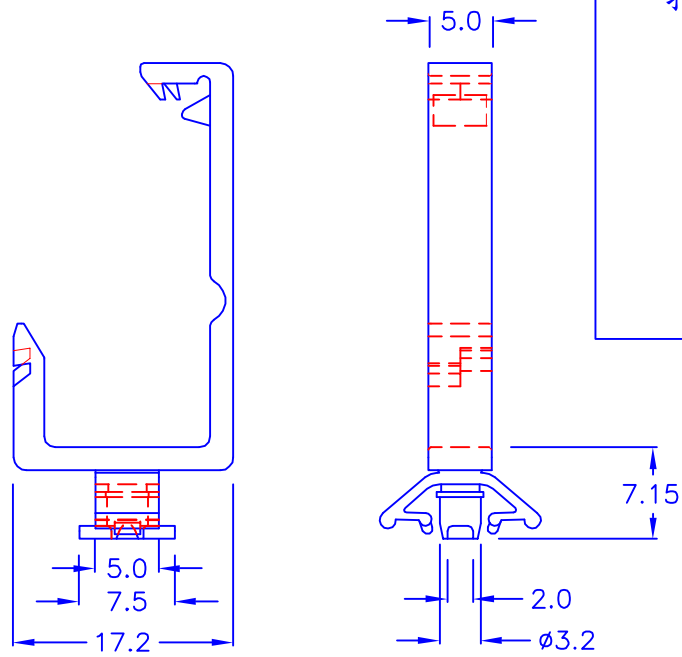
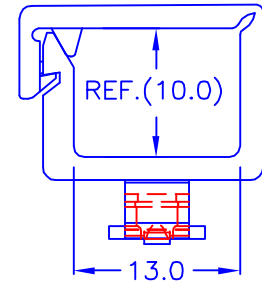
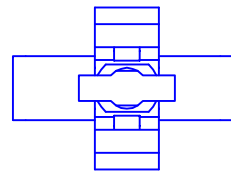


扣合後參考尺寸

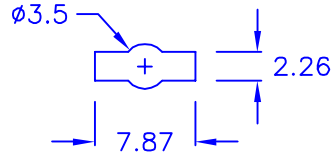


HF

Insert With 90 Degree Angle And Press Down



◎ HOLE IN:



◎ CHASSIS THICKNESS: 0.6~1.0 mm

◎ROHS compliant

DRAW NO. PGAS015367

GJS

PLASTIC TOLERANCE:

L≤10	±0.2
10<L≤30	±0.3
30<L≤50	±0.5
50<L≤100	±0.7
100<L≤250	±1.2
ABOVE 250	±1.5

網頁圖示供參考, 最終以品固公司正式圖面為主

The plastic tolerance is just for your reference; all the measurements and dimensions are according to the "DATA SHEET" issued by PINGOOD.



品固企業股份有限公司
品基電子(東莞)有限公司
蘇州品基電子科技有限公司
鑽隆有限公司
PINGOOD ENTERPRISE CO.,LTD.

MATERIAL: N66 V2 or EQUIVALENT

COLOR: BLACK

PART NAME:

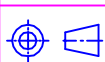
隔離束線座
WIRE SADDLE

PART NO:

CMG-10-N2B

A
SIZE

VERSION
3



UNIT	SCALE
mm	

SHEET 1 OF 1

表單號碼QF135