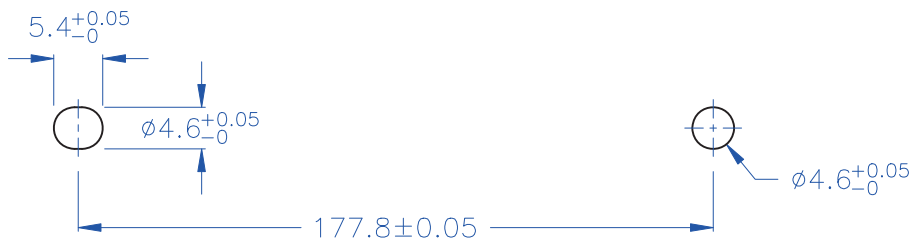




◎ HOLE IN CHASSIS:



◎ MAXIMUM THICKNESS:  $1.7 \pm 0.05$  mm

- ◎ Halogen Free 低鹵
- ◎ ROHS 2.0
- ◎ ROHS 六項 compliant

DRAW NO. PGAS037150 GJS

<b>PLASTIC TOLERANCE:</b> $L \leq 10$ $\pm 0.2$ $10 < L \leq 30$ $\pm 0.3$ $30 < L \leq 50$ $\pm 0.5$ $50 < L \leq 100$ $\pm 0.7$ $100 < L \leq 250$ $\pm 1.2$ ABOVE 250 $\pm 1.5$		網頁圖示供參考, 最終以品固公司正式圖面為主 The plastic tolerance is just for your reference; all the measurements and dimensions are according to the "DATA SHEET" issued by PINGOOD.		 品固企業股份有限公司 品基電子(東莞)有限公司 蘇州品基電子科技有限公司 東莞市钻隆商貿有限公司 鑽隆有限公司 PINGOOD ENTERPRISE CO.,LTD.		<b>PART NAME:</b> 印刷電路板導槽 PCB GUIDE RAIL		<b>VERSION</b> A 4B	
<b>MATERIAL:</b> N66 V2 or EQUIVALENT <b>COLOR:</b> NATURAL		<b>PART NO.:</b> CG-20A				<b>SHEET 1 OF 1</b>			
 <b>UNIT</b> mm		<b>SCALE</b> 							